



Prairie View A&M University

B-GLOBAL

**Broadening Global
Learning Opportunities
Building Academic Leaders**

B-GLOBAL is a two-year program that focuses on employing selected high impact practices in delivering globally infused curricula and co-curricula that build a freshman cohort's knowledge, skills, and values in the area of global competence.

The anchors for the program are:
(1) selected core curriculum or language courses;
(2) a common reading experience;
(3) globally-focused programs, opportunities, festivals, field trips, or contests; and
(4) a capstone project focusing on improving social responsibility.



GLOBAL COMPETENCE

**Self
Awareness**

**Global
Awareness**

**Cultural
Knowledge**

**Social
Responsibility**

Executive Summary of the Quality Enhancement Plan Broadening Global Learning Opportunities: Building Academic Leaders (B-GLOBAL)

Prairie View A&M University's (PVAMU) mission statement and strategic plan commit the institution to invest in "programs and services that address issues and challenges affecting the diverse ethnic and socioeconomic population of Texas and the larger society including the global arena." Over the course of a three-year planning period, the use of high-impact practices to develop students' global competence arose among stakeholders as a high priority for improving student learning. Global competence is frequently described as possessing a set of skills, values, and behaviors that allow one to respectfully engage with other cultures, understand significant world issues or events and respond with the appropriate action. The American Association of Colleges and Universities (AAC&U) and the Organization for Economic Cooperation and Development identify global competence as essential for global citizens and leaders.

This quality enhancement plan features a two-year learning community designed to improve global and intercultural competencies in students admitted with less than 24 semester credit hours. The program seeks to broaden the undergraduate experience by implementing select globally-focused curricular and co-curricular learning opportunities fostering self-awareness, global awareness, cultural knowledge, and social responsibility. The infusion of globally-focused experiences into the undergraduate curriculum will encourage students to use their knowledge and understanding of the world to connect cultures, ideas, and peoples, thus developing innovative solutions to pressing problems and becoming socially responsible agents of change.

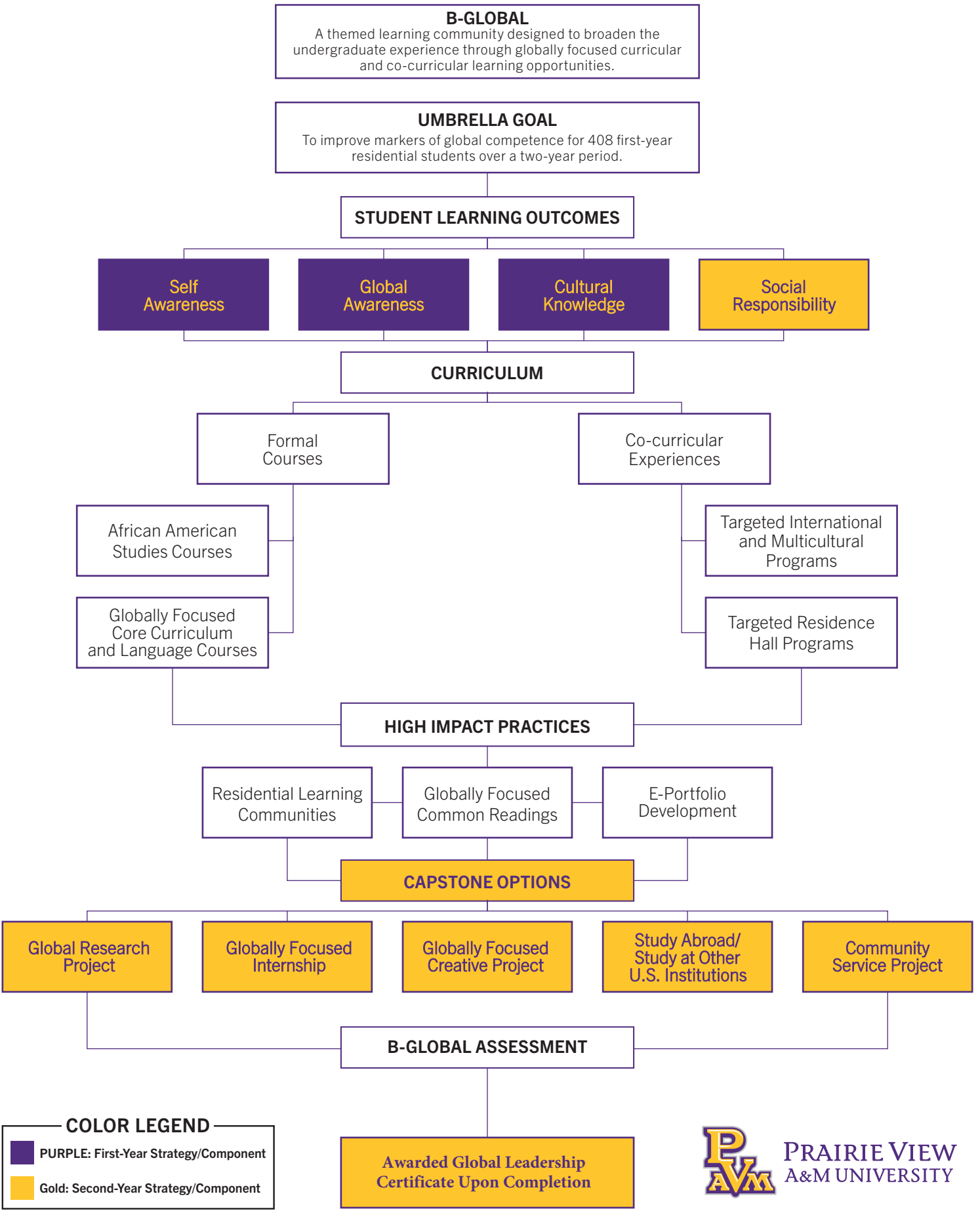
Upon completion of the B-GLOBAL program, students will be able to do the following:

- Identify their own cultural rules and biases and begin to question those rules or biases based on a growing global understanding. (Self-Awareness)
- Describe important issues that impact local and international communities and begin to connect local actions to global contexts. (Global Awareness)
- Demonstrate a comparative understanding of another culture's history, values, politics, communication styles, economy, beliefs, or practices. (Cultural Knowledge)
- Take informed and responsible action to address ethical, social, and environmental challenges in global systems by using interdisciplinary perspectives, knowledge, and skills. (Social Responsibility)

The anchors for the program are (1) a themed living and learning community; (2) selected core curriculum and/or language courses; (3) common reading experiences; and (4) globally-focused experiences (e.g., festivals, field trips, service-learning projects, seminars, lectures) offered by residential entities and University partners. The program's first year focuses on self-awareness, global awareness, and cultural knowledge. In the second year, B-GLOBALers will select a social responsibility capstone project such as a study abroad or study in the United States experience or a globally-focused research experience, internship, creative project, or service project. Each student will contribute signature assignments, experience summaries, reflections, etc., to their ePortfolio, which will be reviewed annually. Upon completion, participants will receive a *Certificate in Global Awareness and Leadership*.

Assessment of learning outcomes will occur annually. Formative assessment will include participant and faculty surveys, focus groups to assess the strengths and weaknesses of the overall program, artifacts evaluated with modified *AAC&U LEAP rubrics for Global Learning and Intercultural Competence*, and reviews of ePortfolios, as they evolve. Summative assessments will include annual administrations of the Global Perspectives Inventory and juried evaluations of capstone projects and completed ePortfolios using modified AAC&U LEAP rubrics. The B-GLOBAL steering committee will meet at least once a semester to evaluate data and make improvements.

B-GLOBAL PROCESS MODEL



COLOR LEGEND

- PURPLE: First-Year Strategy/Component
- Gold: Second-Year Strategy/Component



**PRAIRIE VIEW
A&M UNIVERSITY**